

TECHNICAL MANUAL

**DIRECT SUPPORT AND
GENERAL SUPPORT MAINTENANCE
INCLUDING DEPOT MAINTENANCE
REPAIR PARTS AND SPECIAL TOOLS**

FOR

**LASER TARGET
DESIGNATOR TEST SET
AN/PAM-1
4931-01-040-3117**

LASER TARGET DESIGNATOR SYSTEM

HEADQUARTERS, DEPARTMENT OF THE ARMY

DECEMBER 1984

Direct Support and General Support Maintenance
(Including Depot Maintenance Repair Parts and Special Tools)

FOR

LASER TARGET DESIGNATOR TEST SET

AN/PAM-1

4931-01-040-3117

(LASER TARGET DESIGNATOR SYSTEM)

Current as of 22 August 1984

REPORTING OF ERRORS AND RECOMMENDING IMPROVEMENTS

You can help improve this manual. If you find any mistakes or if you know of a way to improve the procedures, please let us know. Mail your letter, DA Form 2028 (Recommended Changes to Publications and Blank Forms), or DA Form 2028-2 located in back of this manual direct to: Commander, U. S. Army Missile Command, ATTN: AMSMI-SNPS, Redstone Arsenal, AL 35898-5238. A reply will be furnished to you.

Table of Contents

Section	Page	Illus Figure
I. Introduction	1	
II. Repair parts list	II-1	
Group		
0010 ..Target Designator Test Set Laser AN/PAM-1, 13034400	II-1	1
0100 ..MX-9654/PAM-1 Test Adapter, 13034420	II-1	2
0200 ..SM-712/PAM-1 Transmitter Simulator, 13034410.....	II-2	3
0300 ...Control Panel Assembly, 13034409	II-2	4
0400 ..Test Set, Adapter Assembly, 13033994.....	II-3	5
9998 ..Bulk Material.....	II-3	-

*This manual supersedes TM 9-4931-599-34P, dated 8 March 1980.

Section	III. Special Tools List (Not Applicable)	
	IV. Illustrations	IV-1
	V. NSN, Part No. Index	I-1

SECTION I. INTRODUCTION

1. Scope.

This RPSTL lists and authorizes spares and repair parts; special tools; special test, measurement, and diagnostic equipment (TMDE); and other special support equipment required for performance of direct support and general support maintenance including depot maintenance repair of the Target Designator Test Set Laser AN/PAM-1. It authorizes the requisitioning, issue, and disposition of spares, repair parts and special tools as indicated by the source maintenance recoverability (SMR) Codes.

2. General.

In addition to this section, Introduction, this Repair Parts and Special Tools List is divided into the following sections:

a. Section II. Repair Parts List. A list of spares and repair parts authorized by this RPSTL for use in the performance of maintenance. The list also includes parts which must be removed for replacement of the authorized parts. Parts lists are composed of functional groups in ascending alphanumeric sequence, with the parts in each group listed in ascending figure and item number sequence. Bulk materials are listed in item name sequence.

b. Section III. Special Tools List. Not applicable.

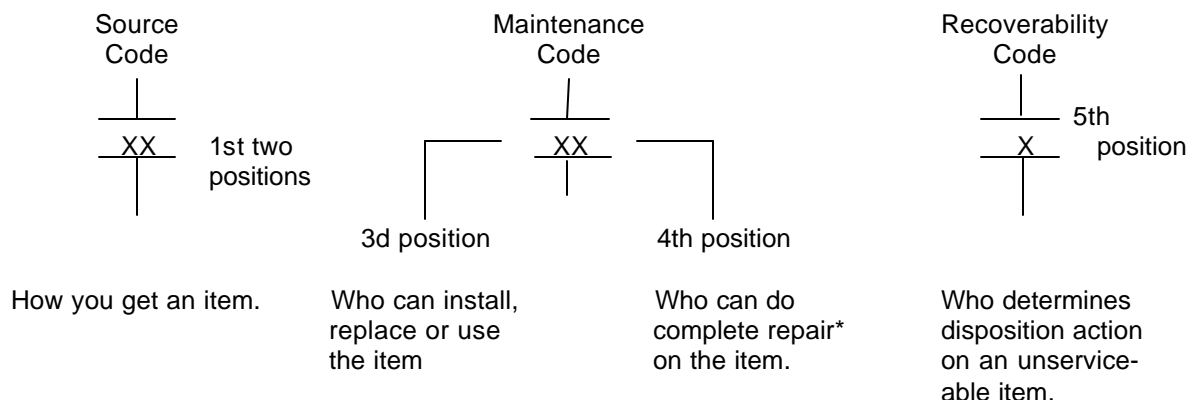
c. Section IV. Illustrations. A series of exploded views of assemblies and subassemblies arranged in functional group and figure number sequence. All exploded parts are identified with callout numbers placed in clockwise sequence. These exploded views reflect repair parts plus those parts which must be removed in the process of disassembly for replacement or repair of the authorized item.

c. Section V. National Stock Number and Part Number Index. A list, in National item identification number (NIIN) sequence, of all National stock numbered items appearing in the listing, followed by a list in alphanumeric sequence of all part numbers appearing in the listing. National stock numbers and part numbers are cross-referenced to each illustration figure and item number appearance.

3. Explanation of Columns (Sections II and III).

a. ITEM NO. (Column (1)). Indicates the number used to identify items called out in the illustration.

b. SMR CODE (Column (2)). The Source, Maintenance, and Recoverability (SMR) Code is a 5-position code containing supply/requisitioning information, maintenance category authorization criteria, and disposition instruction, as shown in the following breakout:



*Complete Repair: Maintenance capacity, capability, and authority to perform all corrective maintenance tasks of the "Repair" function in a use/user environment in order to restore serviceability to a failed item.

(1) Source Code. The source code tells you how you get an item needed for maintenance, repair, or overhaul of an end item/equipment. Explanations of source codes follow:

Code	Explanation
PA PB PC** PD PE PF PG	<p>Stocked items; use the applicable SSN to request/requisition items with these source codes. They are authorized to the category indicated by the code entered in the 3d position of the SMR Code.</p> <p>**NOTE: Items coded PC are subject to deterioration.</p>
KD KF KB	<p>Items with these codes are not to be requested/requisitioned individually. They are part of a kit which is authorized to the maintenance category indicated in the 3d position of the SMR Code. The complete kit must be requisitioned and applied.</p>
MO-(Made at Org Level) MF-(Made at DS Level) MH-(Made at GS Level) ML-(Made at Specialized Repair Act (SRA)) MD-(Made at Depot)	<p>Items with these codes are not to be requested/requisitioned individually. They must be made from bulk material which is identified by part number in the DESCRIPTION AND USABLE ON CODE (UOC) column and listed in the Bulk Material group of the repair parts list in this RPSTL. If the item is authorized to you by the 3d position code of the SMR Code, but the source code indicates it is made at a higher level, order the item from the higher level of maintenance.</p>

Code	Explanation
AO-(Assembled by Org Level)	Items with these codes are not to be requested/requisitioned individually. The parts that make up the assembled item must be requisitioned or fabricated and assembled at the level of maintenance indicated by the source code. If the 3d position code of the SMR Code authorizes you to replace the item, but the source code indicates the item is assembled at a higher level, order the item from the higher level of maintenance.
AF-(Assembled by OS Level)	
AH-(Assembled by GS Level)	
AL-(Assembled by SRA)	
AD-(Assembled by Depot)	

XA - Do not requisition an "XA"-coded item. Order its next higher assembly. (Also, refer to the NOTE below.)

XB - If an "XB" item is not available from salvage, order it using the FSCM and part number given.

XC - Installation drawing, diagram, instruction sheet, field service drawing, that is identified by manufacturer's part number.

XD - Item is not stocked. Order an "XD"-coded item through normal supply channels using the FSCM and part number given, if no NSN is available.

NOTE: Cannibalization or controlled exchange, when authorized, may be used as a source of supply for items with the above source codes, except for those source coded "XA" or those aircraft support items restricted by requirements of AR 700-42.

(2) Maintenance Code. Maintenance codes tell you the level(s) of maintenance authorized to USE and REPAIR support items. The maintenance codes are entered in the third and fourth positions of the SMR Code as follows:

(a) The maintenance code entered in the 3d position tells you the lowest maintenance level authorized to remove, replace, and use an item. The maintenance code entered in the 3d position will indicate authorization to one of the following levels of maintenance.

Code	Application/Explanation
C	- Crew or operator maintenance done within organizational or aviation unit maintenance.
O	- Organizational or aviation unit level can remove, replace and use the item.
F	- Direct support or aviation intermediate level can remove, replace, and use the item.
H	- General support level can remove, replace, and use the item.
L	- Specialized repair activity can remove, replace, and use the item.
D	- Depot level can remove, replace, and use the item.

(b) The maintenance code entered in the fourth position tells whether or not the item is to be repaired and identifies the lowest maintenance level with the capability to do complete repair (i.e., perform all authorized repair functions). **(NOTE: Some limited repair may be done on the item at a lower level of maintenance, if authorized by the Maintenance Allocation Chart (MAC) and SMR Codes.)** This position will contain one of the following maintenance codes.

Code	Application/Explanation
O	- Organizational or aviation unit is the lowest level that can do complete repair of the item.
F	- Direct support or aviation intermediate is the lowest level that can do complete repair of the item.
H	- General support is the lowest level that can do complete repair of the item.
L	- Specialized repair activity (designate the specialized repair activity) is the lowest level that can do complete repair of the item.
D	- Depot is the lowest level that can do complete repair of the item.
Z	- Nonrepairable. No repair is authorized.
B	- No repair is authorized. (No parts or special tools are authorized for the maintenance of a "B" coded item). However, the item may be reconditioned by adjusting, lubricating, etc., at the user level.

(3) Recoverability Code. Recoverability codes are assigned to items to indicate the disposition action on unserviceable items. The recoverability code is entered in the fifth position of the SMR Code as follows:

Recoverability Codes	Application/Explanation
Z	- Nonrepairable item. When unserviceable, condemn and dispose of the item at the level of maintenance shown in 3d position of SMR Code.
O	- Repairable item. When uneconomically repairable, condemn and dispose of the item at organizational or aviation unit level.
F	- Repairable item. When uneconomically repairable, condemn and dispose of the item at the direct support or aviation intermediate level.

- H - Reparable item. When economically repairable, condemn and dispose of the item at the general support level.
- D - Reparable item. When beyond lower level repair capability, return to depot. Condemnation and disposal of item not authorized below depot level.
- L - Reparable item. Condemnation, and disposal not authorized below specialized repair activity (SRA).
- A - Item requires special handling or condemnation procedures because of specific reasons (e.g., precious metal content, high dollar value, critical material, or hazardous material). Refer to appropriate manuals/directives for specific instructions.

c. FSCM (Column (3)). The Federal Supply Code for Manufacturer (FSCM) is a 5-digit numeric code which is used to identify the manufacturer, distributor, or Government agency, etc., that supplies the item.

d. PART NUMBER (Column (4)). Indicates the primary number used by the manufacturer (individual, company, firm, corporation, or Government activity), which controls the design and characteristics of the item by means of its engineering drawings, specifications standards, and inspection requirements to identify an item or range of items.

NOTE: When you use an NSN to requisition an item, the item you receive may have a different part number from the part ordered.

e. DESCRIPTION AND USABLE ON CODE (UOC)(Column (5)). This column includes the following information:

(1) The Federal item name and, when required, a minimum description to identify the item.

(2) Part numbers for bulk materials are referenced in this column in the line item entry for the item to be manufactured/fabricated.

(3) The USABLE ON CODE, when applicable (see paragraph 5, Special Information).

(4) In the Special Tools List section, the Basis of Issue (BOI) appears as the last line(s) in the entry for each special tool, special TMDE, and other special support equipment. When density of equipments supported exceeds density spread indicated in the basis of issue, the total authorization is increased proportionately.

f. QTY (Column (6)). The QTY (quantity per figure column) indicates the quantity of the item used in the breakout shown on the illustration figure, which is prepared for a functional group, subfunctional group, or an assembly. A "V" appearing in the column in lieu of a quantity indicates that the quantity is variable and the quantity may vary from application to application.

4. Explanation of Columns (Sect. V).

a. NATIONAL STOCK NUMBER (NSN) INDEX.

(1) STOCK NUMBER column. This column lists the NSN by National item identification number (NIIN) sequence. The NIIN consists of the last nine digits

NSN

of the NSN (i.e., 5305-01-574-1467). When using this column to locate an item, ignore the first 4 digits of NSN. However, the complete NSN should be used when ordering items by stock number.

(2) FIG. column. This column lists the number of the figure where the item is identified/located. The figures are in numerical order in Section II and Section III.

(3) ITEM column. The item number identifies the item associated with the figure listed in the adjacent FIG. column. This item is also identified by the NSN listed on the same line.

b. PART NUMBER INDEX Part numbers in this index are listed by part number in ascending alphanumeric sequence (i.e., vertical arrangement of letter and number combination which places the first letter or digit of each group in order A through Z, followed by the numbers 0 through 9 and each following letter or digit in like order).

(1) FSCM column. The Federal Supply Code for Manufacture (FSCM) is a 5-digit numeric code used to identify the manufacturer, distributor, or Government agency, etc., that supplies the item.

(2) PART NUMBER column. Indicates the primary number used by the manufacturer (individual, firm, corporation, or Government activity), which controls the design and characteristics of the item by means of its engineering drawings, specifications standards, and inspection requirements to identify an item or range of items.

(3) STOCK NUMBER column. This column lists the NSN for the associated part number and manufacturer identified in the PART NUMBER and FSCM columns to the left.

(4) FIG. column. This column lists the number of the figure where the item is identified/located in Section II and III.

(5) ITEM column. The item number is that number assigned to the item as it appears in the figure referenced in the adjacent figure number column.

5. Special Information.

a. USABLE ON CODE. The usable on code appears in the lower left corner of the Description column heading. Usable on codes are shown as "UOC:" in the Description Column (justified left) on the first line applicable item description nomenclature. Uncoded items are applicable to all models. Identification of the usable on codes in the RPSTL are:

<u>Code</u>	<u>Used On</u>
MAC	13034400

b. INDEX NUMBERS. Items which have the word BULK in the figure column will have an index number shown in the item number column. This index number is a cross-reference between the National Stock Number/Part Number Index and the bulk material list in Section II.

c. For requisitioning miscellaneous consumable maintenance supplies or expendable supplies, use CTA 50-970.

d. National stock numbers (NSN) that are missing for "P" source coded items have been applied for and will be added to this manual by a change/revision when they are entered in the Army Master Data File (AMDF). Until the NSN's are established and published, submit exception requisitions to: Commander, U.S. Army Missile Command, ATTN: AMSMI-SS, Redstone Arsenal, AL 35898-5239.

6. How to Locate Repair Parts.

a. When National Stock Number or Part Number is Not Known.

(1) First. Using the table of contents, determine the assembly group or subassembly group to which the item belongs. This is necessary since figures are prepared for assembly groups and subassembly groups, and listings are divided into the same groups.

(2) Second. Find the figure covering the assembly group or subassembly group to which the item belongs.

(3) Third. Identify the item on the figure and note the item number.

(4) Fourth. Refer to the Repair Parts List for the figure to find the part number for the item number noted on the figure.

(5) Fifth. Refer to the Part Number Index to find the NSN, if assigned.

b. When National Stock Number or Part Number is Known:

(1) First. Using the Index of National Stock Numbers and Part Numbers, find the pertinent National Stock Number or Part Number. The NSN index is in National Item Identification Number (NIIN) sequence (see 4.a(1)). The part numbers in the Part Number index are listed in ascending alpha numeric sequence (see 4.b). Both indexes cross-reference you to the illustration figure and item number of the item you are looking for.

(2) Second. After finding the figure and item number, verify that the item is the one you're looking for, then locate the item number in the repair parts list for the figure.

7. Abbreviations. Not Applicable.

REPAIR PARTS LIST

(1) ITEM NO	(2) SMR CODE	(3) FSCM	(4) PART NUMBER	(5) DESCRIPTION AND USABLE ON CODES (UOC)	(6) QTY
				GROUP 0010 FIG 1 AN/PAM-1 LASER TARGET DESIGNATOR TEST SET 13034400 (18876)	
1	PBFDD	18876	13034420	TEST ADAPTER.POWER (FOR PARTS SEE FG GROUP 0100).....	1
2	XDFDD	18876	13034401	CASE, TEST SET	1
3	XDDZZ	55717	11034461	CASE, CARRYING	1
4	XDFZZ	55717	13034463-1	INSERT, UPPER.....	1
5	XDFZZ	55717	13034462	INSERT, LOWER.....	1
6	PBFDD	18876	13034410	SIMULATOR, TRANSMITT (FOR PARTS SEE..... FG GROUP 0200).....	1
7	PBFZZ	18876	13034406	ADAPTER, FILL VALVE.....	1
8	XDDZZ	18876	8034915	PLATE, IDENTIFICATIO	1
9	PBFDD	18876	13033994	TEST SET, ADAPTER AS (FOR PARTS SEE FG GROUP 0400)	1
				GROUP 0100 FIG 2 MX-9654/PAM-1 TEST ADAPTER 13034420 (18876)	
1	PAFDD	18876	13034408	CABLE ASSEMBLY, SPEC.....	1
2	PADZZ	96906	MS27507-F-10	ELBOW, CABLE CLAMP.....	1
3	PADZZ	96906	MS27473T10F35S	CONNECTOR, PLUG, ELEC.....	1
4	PAFZZ	96906	MS35489-6	GROMMET, NONMETALLIC.....	1
5	PAFZZ	80205	NAS671C6	NUT, PLAIN, HEXAGON.....	1
6	PAFZZ	96906	MS35338-136	WASHER, LOCK	5
7	PAFZZ	80205	NAS620C6	WASHER, FLAT.....	6
8	PAFZZ	96906	MS35431-3	TERMINAL, LUG	2
9	PAFZZ	96906	MS9025-03	CLAMP, LOOP	1
10	XDDZZ	18876	8034915	PLATE, IDENTIFICATIO	1
11	XDDZZ	55717	13034422	CHASSIS	1
12	PAFZZ	18876	13034322	TERMINAL, LUG	1
13	PAFZZ	81349	M39012/21-0001	CONNECTOR, RECEPTACL	1
14	PAFZZ	81349	RCR07G510JS	RESISTOR, FIXED, COMP	1
15	PAFZZ	81349	SE20X-D01S	TERMINAL, STUD	4
16	PAFZZ	80205	NAS620C4	WASHER, FLAT	4
17	PAFZZ	96906	MS35338-135	WASHER, LOCK	4
18	PAFZZ	80205	NAS1635-04-5	SCREW, MACHINE	4
19	PAFZZ	80205	NAS1635-06-8	SCREW, MACHINE	5
20	PAFZZ	96906	MS14001-222	SWITCH, TOGGLE	1
21	PAFZZ	81349	M3786/20-022	SWITCH, ROTARY	1
22	PAFZZ	96906	MS91528-1P3B	KNOB	1
23	PAFZZ	96906	MS14001-302	SWITCH, TOGGLE	1
24	PAFZZ	96906	MS25224-3	GUARD, SWITCH	1
25	XDFZZ	55717	13034423	PANEL, FRONT	1
26	PAFZZ	81349	M39024/10-02	JACK, TIP	1

SECTION II

TM 9-4931-599-34P

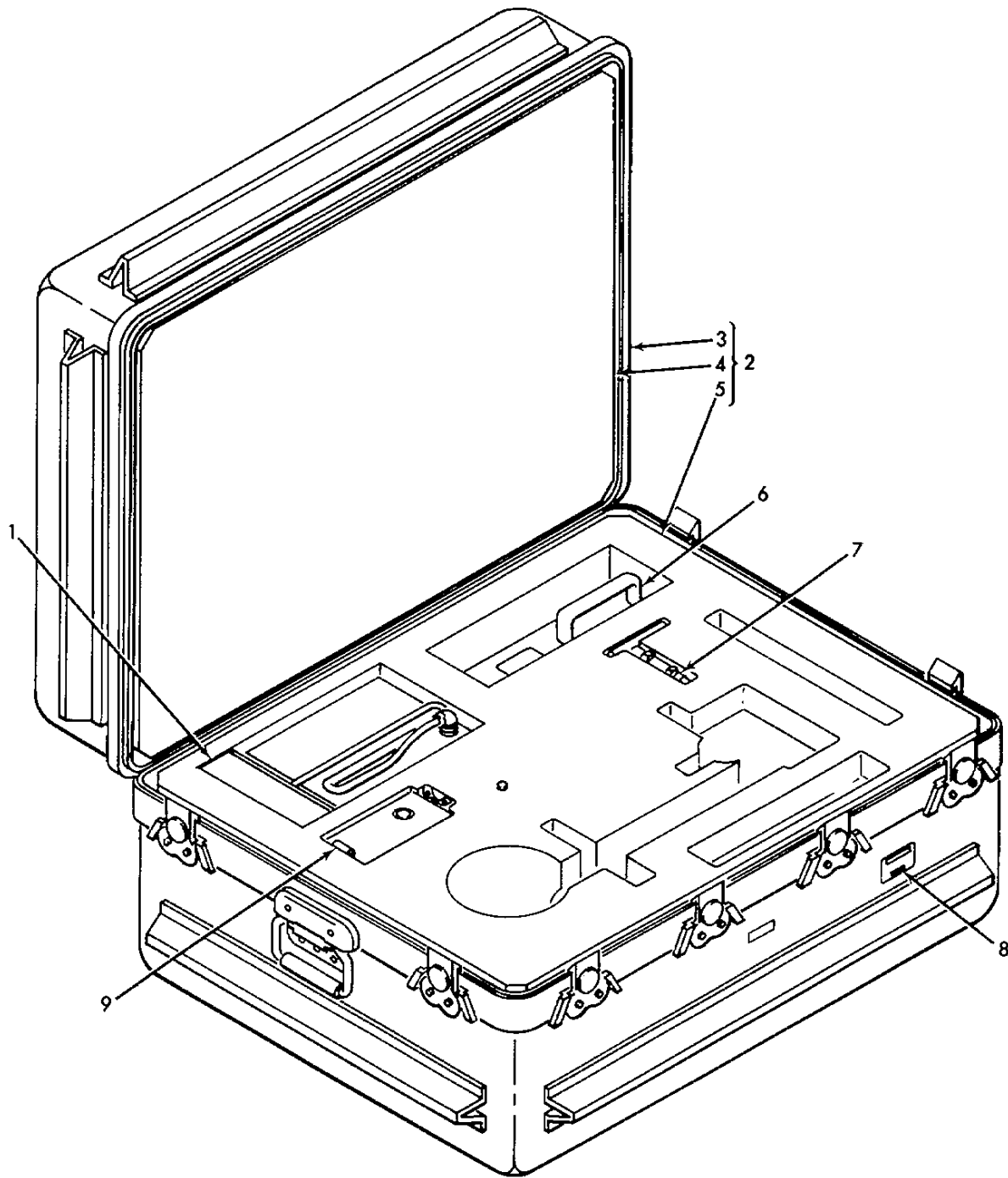
(1) ITEM NO	(2) SMR CODE	(3) FSCM	(4) PART NUMBER	(5) DESCRIPTION AND USABLE ON CODES (UOC)	(6) QTY
27	PAFZZ	81349	M39024/10-03	JACK, TIP	1
28	PAFZZ	81349	RCR07G102JS	RESISTOR, FIXED, COMP	1
GROUP 0200 FIG 3 SM-712/PAM-1 TRANSMITTER SIMULATOR 13034410 (18876)					
1	XDFDD	55717	13034409	TERMINAL BD ASY (FOR PARTS SEE..... FG GPOUP 0300.....	1
2	PAFZZ	80205	NAS620C6	WASHER, FLAT.....	8
3	PAFZZ	96906	MS51957-28	SCREW, MACHINE	8
4	XDDZZ	55717	13034414	HOUSING	1
5	XDDZZ	18876	8034915	PLATE, IDENTIFICATIO	1
6	XDFZZ	55717	13034413	HANDLE	1
7	PAFZZ	80205	NAS620C10	WASHER, FLAT	2
8	PAFZZ	96906	MS35338-138	WASHER, LOCK	2
9	PAFZZ	96906	MS51958-60	SCREW, MACHINE	2
10	PAFZZ	80205	NAS671C4	NUT, PLAIN, HEXAGON	2
11	PAFZZ	96906	MS35338-135	WASHER, LOCK	2
12	PAFZZ	80205	NAS620C4	WASHER, FLAT.....	4
13	PAFZZ	96906	MS51957-15	SCREW, MACHINE	2
14	PAFZZ	96906	MS91528-1GG3B	KNOB	1
GROUP 0300 FIG 4 CONTROL PANEL ASSEMBLY 13034409 (18876)					
1	PAFZZ	81349	M3786/20-101	SWITCH, ROTARY	1
2	PAFZZ	81349	M39024/10-03	JACK, TIP	4
3	PAFZZ	88044	AN960-416L	WASHER, FLAT	8
4	PAFZZ	81349	M39024/10-02	JACK, TIP	4
5	XDDZZ	55717	11559570	DECAL, H.V.....	1
6	PAFZZ	18876	P39017-002-02	RESISTOR, FIXED, FILM	1
7	PADZZ	80205	NAS70702	TERMINAL, STUD	2
8	PAFZZ	81349	RCR32G510JS	RESISTOR, FIXED, COMP	1
9	PAFZZ	81349	RCR20G510JS	RESISTOR, FIXED, COMP	1
10	PAFZZ	81349	RCR07G123JS	RESISTOR, FIXED, COMP	1
11	PAFZZ	81349	RCR07G301JS	RESISTOR, FIXED, COMP	1
12	PAFZZ	81349	RCR32G112JS	RESISTOR, FIXED, COMP	1
13	XDDZZ	18876	13034440-2	TERMINAL, STUD	21
14	PAFZZ	81349	JANTX15765	LIGHT EMITTING DIOD	3
15	PAFZZ	81349	M39012/21-0001	CONNECTOR, RECEPTACL	3
16	PAFZZ	81349	RCR07G182JS	RESISTOR, FIXED, COMP	2
17	PAFZZ	81349	RCR07G102JS	RESISTOR, FIXED, COMP	2
18	PAFZZ	18876	13034322	TERMINAL, LUG	3
19	PAFZZ	81349	RCR07G474JS	RESISTOR, FIXED, COMP	1
20	PAFZZ	55717	13034027	CAPACITOR, FIXED, PLA	1

SECTION II

TM 9-4931-599-34P

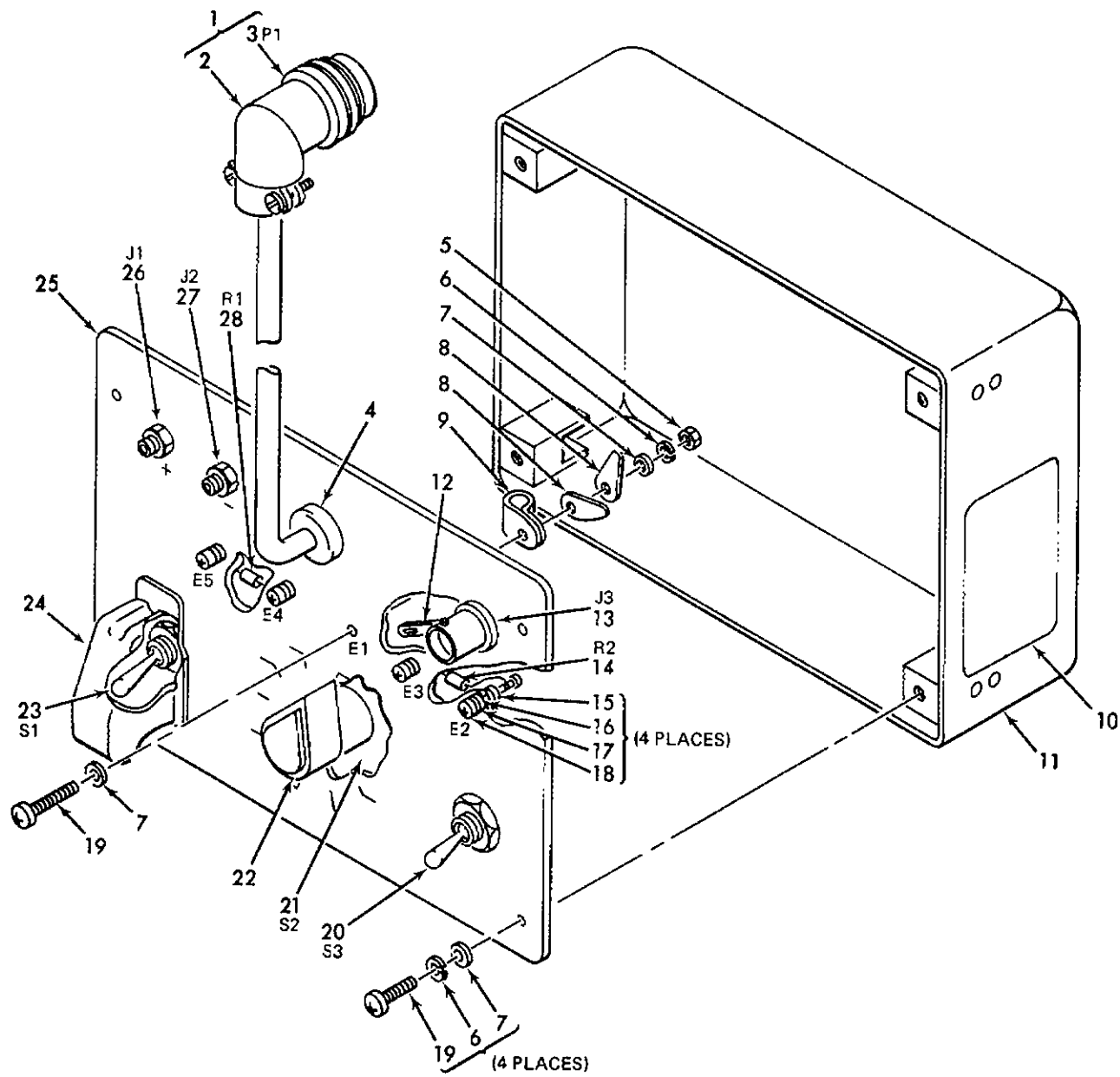
(1) ITEM NO	(2) SMR CODE	(3) FSCM	(4) PART NUMBER	(5) DESCRIPTION AND USABLE ON CODES (UOC)	(6) QTY
21	PAFZZ	81349	M24308/3-3	CCNECTOR, RECEPTACL.....	1
22	XADDL	55717	13034419	TERMINAL BOARD.....	1
FIG 5					
GROUP 0400					
TEST SET ADAPTER ASSEMBLY					
13033994 (18876)					
1	PAFZZ	80205	NAS671C4	NUT, PLAIN, HEXAGON	6
2	PAFZZ	96906	MS35338-135	WASHER, LOCK	8
3	PAFZZ	96906	MS25036-148	TERMINAL, LUG	3
4	PAFZZ	88044	AN960C4L	WASHER, FLAT	5
5	PADZZ	80205	NAS1515H04L	WASHER, FLAT	3
6	PAFZZ	96906	MS16995-10	SCREW, CAP, SOCKET HE	2
7	PAFZZ	18876	13033921	LATCH	1
8	PAFZZ	18876	13034253	CONTACT, ELECTRICAL	3
9	PAFZZ	18876	13034229	INSULATOR, BUSHING	3
10	PAFZZ	96906	MS51959-28	SCREW, MACHINE	2
11	PAFZZ	18876	13033976	HINGE, BATTERY PACK	1
12	XDDZZ	18876	8034915	PLATE, IDENTIFICATIO	1
13	XDDDL	55717	13033986	ADAPTER, HOUSING	1
14	PADZZ	96906	MS21209C0620	INSERT, SCREW THREAD	8
15	PADZZ	96906	MS16555-628	PIN, STRAIGHT, HEADLE	1
16	PADZZ	96906	MS21209C0420	INSERT, SCREW THREAD.....	2
17	XDDDL	55717	13033983	PANEL, INTERFACE	1
18	PADZZ	55717	13033991	PIN, STRAIGHT, HEADLE	1
19	PADZZ	96906	MS16555-632	PIN, STRAIGHT, HEADLE	1
20	PAFZZ	96906	MS24693-268	SCREW, MACHINE	6
21	PADZZ	18876	13033893	TERMINAL, LUG	3
22	PAFZZ	96906	MS28775-021	PACKING, PREFORMED	1
GROUP 9998 FIG BULK					
BULK MATERIAL					
1	PADZZ	81349	MILI23053-5CL1W H0-063	INSULATION SLEEVING	V
2	PADZZ	81349	M23053/5-105-9	INSULATION SLEEVING	V
3	PADZZ	81349	M23053/5-202-C	INSULATION SLEEVING	V
4	PADZZ	81349	M23053/5-107-0	INSULATION SLEEVING	V
5	PADZZ	81349	M23053/5-205-C	INSULATION SLEEVING	V
6	PADZZ	81349	MILI23053-5CL2 CLEARO-250ID	INSULATION SLEEVING	V
7	PADZZ	81349	M23053/7-210-C	INSULATION SLEEVING	V
8	PADZZ	81349	M23053/7-210-C	INSULATION SLEEVING	V
9	PADZZ	81349	M23053/7-211-C	INSULATION SLEEVING	V
10	PADZZ	81349	M23053/7-102-9	SLEEVING, SHRINK	V
11	PADZZ	81349	MILT43435TYPE 1FINISHASIZE3	TAPE LACING AND TY1	V
12	PAFZZ	81349	MILT27730SIZE1	TAPE, ANTISEIZING	V
13	PADZZ	81348	QQW343TYS20A WGSO	WIRE, ELECTRICAL	V

SECTION IV. ILLUSTRATIONS



MS310982C

Figure 1. AN/PAM-1 Laser Target Designator Test Set (13034400) (Group 0010)



MS310985B

Figure 2. MX-9654/PAM-1 Test Adapter (13034420) (Group 0100)

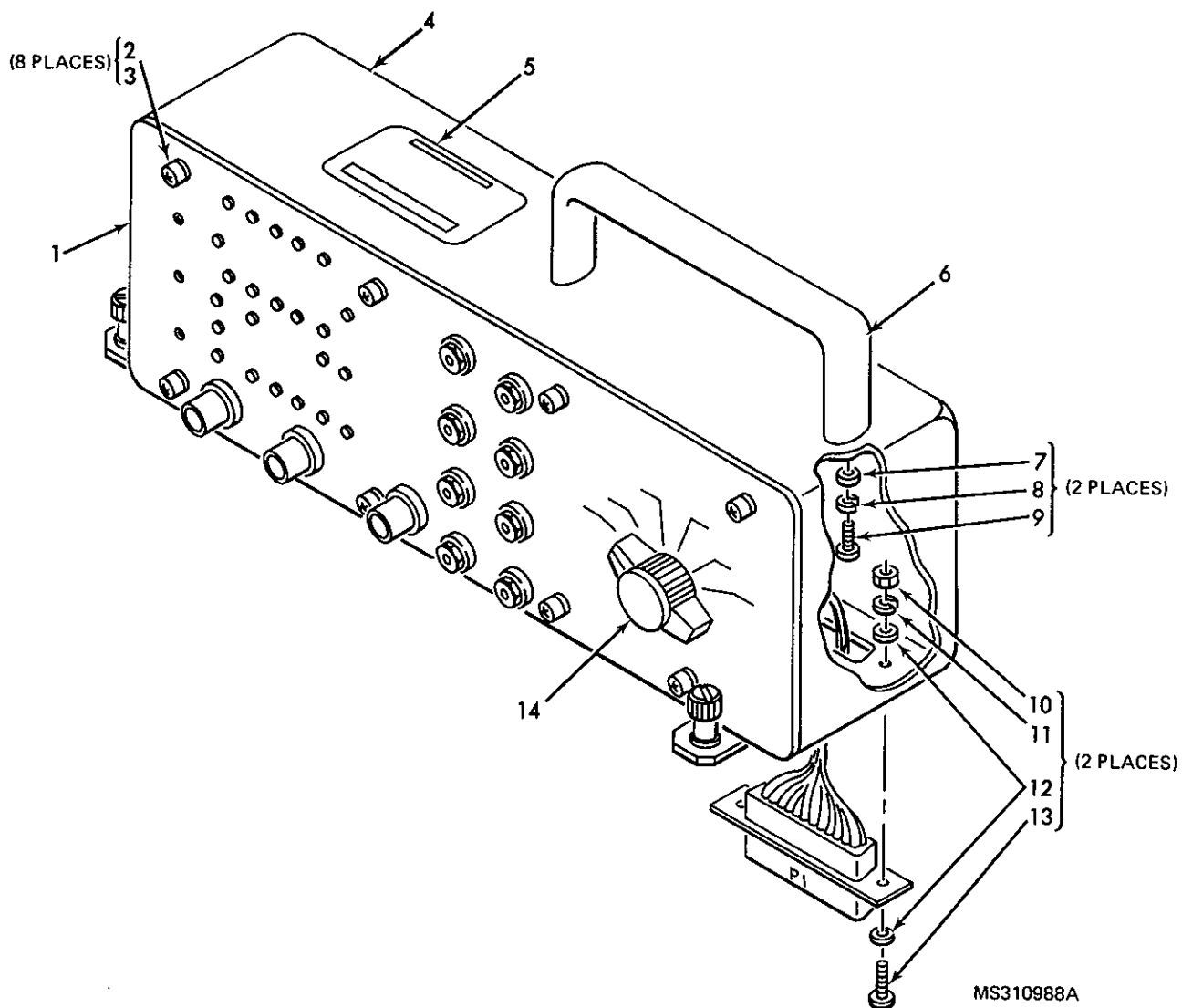
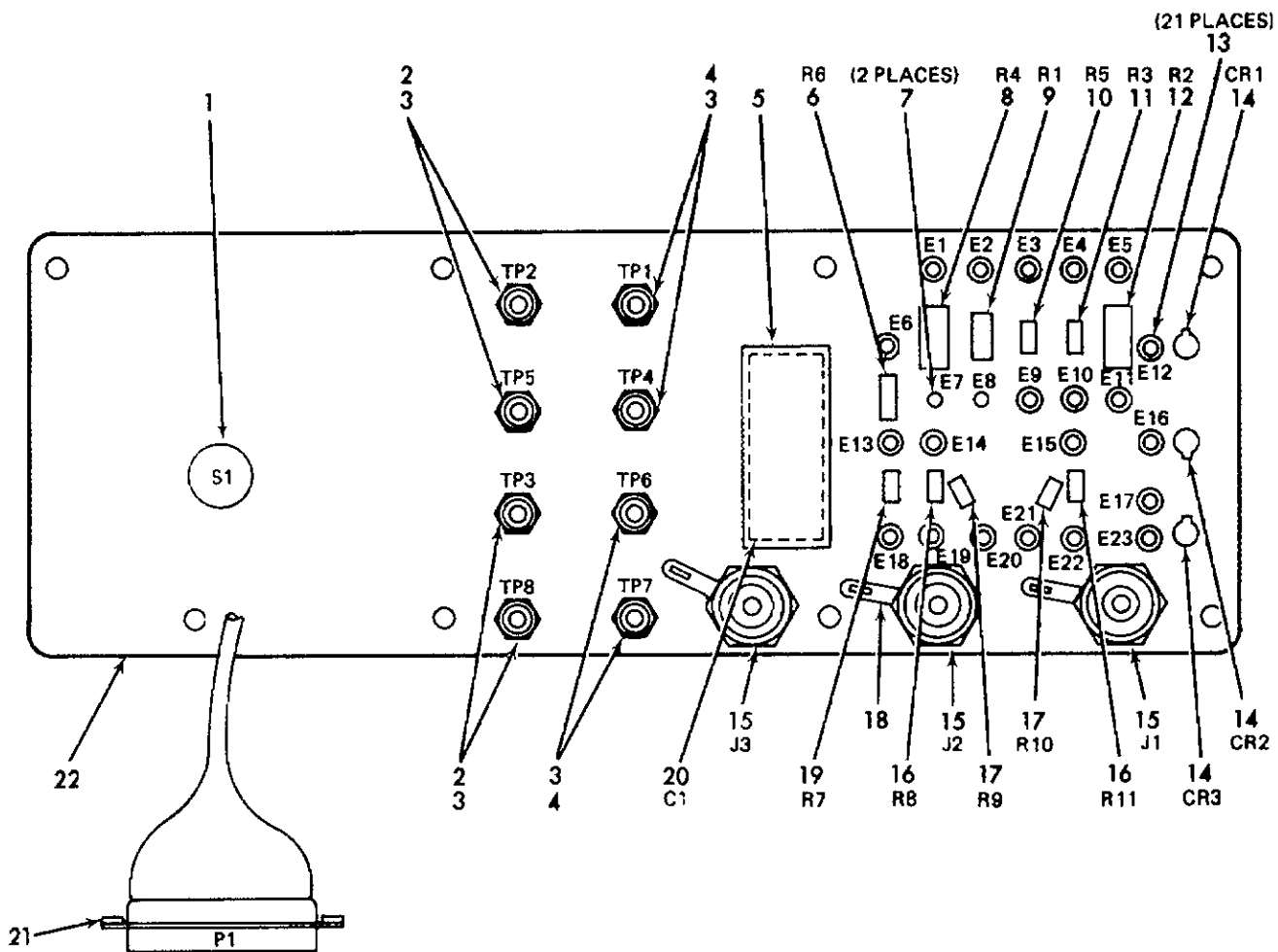
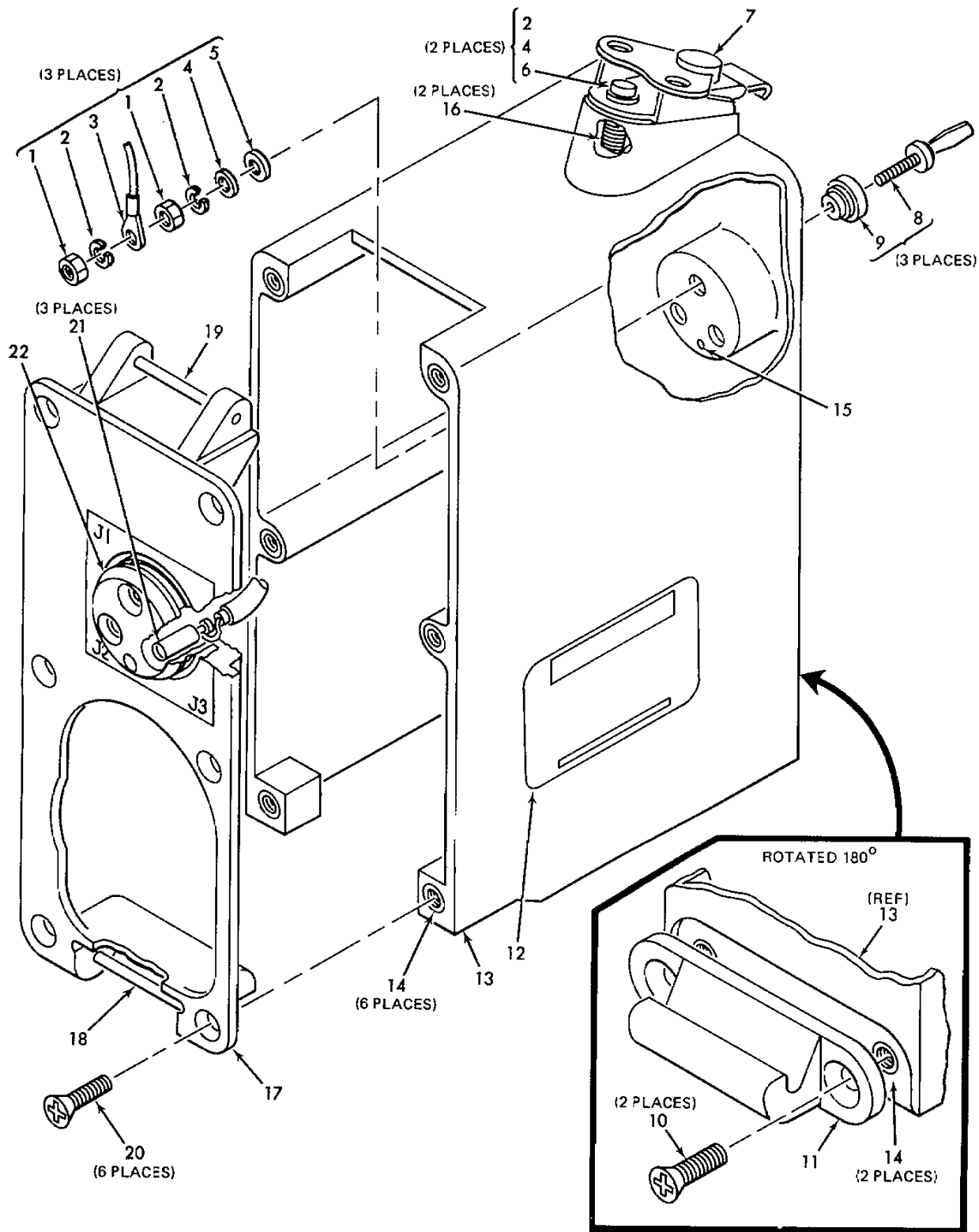


Figure 3. SM-712/PAM-1 Transmitter Simulator (13034410)(Group 0200)



MS310991B

Figure 4. Control Panel Assembly (13034409) (Group 0300)



MS310997A

Figure 5. Test Set Adapter Assembly (13033994) (Group 0400)

NATIONAL STOCK NUMBER AND PART NUMBER INDEX

NATIONAL STOCK NUMBER INDEX					
STOCK NUMBER	FIG.	ITEM	STOCK NUMBER	FIG.	ITEM
5940-00-050-2308	2	8	5315-00-844-5599	5	19
5305-00-054-5649	3	13	8030-00-889-3534	BULK	12
5305-00-054-6652	3	3	5940-00-910-3390	2	12
5310-00-057-0573	2	16		4	18
	3	12	5970-00-916-2679	BULK	3
5305-00-059-3656	3	9	5310-00-929-6395	2	6
5970-00-082-3942	BULK	2	5310-00-933-8118	2	17
5905-00-105-7767	4	19		3	11
5905-00-106-1249	2	14		5	2
5905-00-106-1278	4	10	5310-00-933-8120	3	8
5905-00-106-9349	4	8	5355-00-935-3984	2	22
5905-00-110-7620	2	28	5310-00-939-1074	5	5
	4	17	5970-00-954-1624	BULK	4
5905-00-111-4750	4	11	5305-00-959-0379	5	6
5940-00-113-9828	5	3	4020-00-974-1875	BULK	11
5905-00-114-5343	4	16	5310-00-989-0640	3	7
5905-00-114-5438	4	9	5935-01-013-0341	2	2
5310-00-167-0835	4	3	5935-01-013-4468	2	3
5305-00-170-2923	5	20	5930-01-015-8322	4	1
5910-00-189-7284	4	20	5961-01-016-7282	4	14
5310-00-208-3786	3	10	5930-01-026-8585	2	21
	5	1	5930-01-027-8180	2	20
5305-00-241-1076	2	18	4931-01-056-7974	1	1
5325-00-263-6632	2	4	4931-01-056-9578	1	6
5305-00-362-3206	2	19	5940-01-057-0362	5	21
5935-00-439-3748	4	21	5970-01-057-1433	5	9
5905-00-484-0267	4	12	4931-01-057-2205	1	7
5340-00-558-8826	5	14	4931-01-057-3846	2	1
5310-00-584-3782	5	4	5930-01-058-5018	2	23
5310-00-616-8660	2	5	5355-01-061-3012	3	14
5930-00-617-9718	2	24	5999-01-062-4991	5	8
5330-00-631-1341	5	22	5970-01-076-4630	BULK	7
5935-00-702-4199	2	26		BULK	8
	4	4	5970-01-078-3647	BULK	10
5940-00-725-9498	4	7	1260-01-078-3939	5	7
5970-00-740-2972	BULK	1	5970-01-078-4036	BULK	9
5935-00-762-0312	2	27	4931-01-078-6035	5	11
	4	2	4931-01-080-8604	1	9
5305-00-763-6963	5	10	5905-01-133-6607	4	6
5970-00-767-0515	BULK	5			
5970-00-767-0524	BULK	6			
5310-00-773-7624	2	7			
	3	2			
5315-00-810-0505	5	15			
5340-00-811-3025	2	9			
5315-00-811-9214	5	18			
5340-00-827-4024	5	16			
5935-00-835-0510	2	13			
	4	15			
6145-00-839-7432	BULK	13			

NATIONAL STOCK NUMBER AND PART NUMBER INDEX

FSCM	PART NUMBER	PART NUMBER INDEX		FIG.	ITEM
			STOCK NUMBER		
88044	AN960-416L		5310-00-167-0835	4	3
88044	AN960C4L		5310-00-584-3782	5	4
81349	JANTX1N5765		5961-01-016-7282	4	14
81349	MIL123053-5CL1WH 0-063		5970-00-740-2972	BULK	1
81349	MIL123053-5CL2CL FARO-250ID		5970-00-767-0524	BULK	6
81349	MILT27730SIZE1		8030-00-889-3534	BULK	12
81349	MILT43435TYPE1FI NISHASIZE3		4020-00-974-1875	BULK	11
96906	MS14001-222		5930-01-027-8180	2	20
96906	MS14001-302		5930-01-058-5018	2	23
96906	MS16555-628		5315-00-810-0505	5	15
96906	MS16555-632		5315-00-844-5599	5	19
96906	MS16995-10		5305-00-959-0379	5	6
96906	MS21209C0420		5340-00-827-4024	5	16
96906	MS21209C0620		5340-00-558-8826	5	14
96906	MS24693-26B		5305-00-170-2923	5	20
96906	MS25036-148		5940-00-113-9828	5	3
96906	MS25224-3		5930-00-617-9718	2	24
96906	MS27473T10F35S		5935-01-013-4468	2	3
96906	MS27507-F-10		5935-01-013-0341	2	2
96906	MS28775-021		5330-00-631-1341	5	22
96906	MS35338-135		5310-00-933-8118	2	17
				3	11
				5	2
96906	MS35338-136		5310-00-929-6395	2	6
96906	MS35338-138		5310-00-933-8120	3	8
96906	MS35431-3		5940-00-050-2308	2	8
96906	MS35489-6		5325-00-263-6632	2	4
96906	MS51957-15		5305-00-054-5649	3	13
96906	MS51957-28		5305-00-054-6652	3	3
96906	MS51958-60		5305-00-059-3656	3	9
96906	MS51959-28		5305-00-763-6963	5	10
96906	MS9025-03		5340-00-811-3025	2	9
96906	MS91528-1GG3B		5355-01-061-3012	3	14
96906	MS91528-1P3B		5355-00-935-3984	2	22
81349	M23053/5-105-9		5970-00-082-3942	BULK	2
81349	M23053/5-107-0		5970-00-954-1624	BULK	4
81349	M23053/5-202-0		5970-00-916-2679	BULK	3
81349	M23053/5-205-0		5970-00-767-0515	BULK	5
81349	M23053/7-102-9		5970-01-078-3647	BULK	10
81349	M23053/7-210-0		5970-01-076-4630	BULK	7
				BULK	8
81349	M23053/7-211-0		5970-01-078-4036	BULK	9
81349	M24308/3-3		5935-00-439-3748	4	21
81349	M3786/20-022		5930-01-026-8585	2	21
81349	M3786/20-101		5930-01-015-8322	4	1
81349	M39012/21-0001		5935-00-835-0510	2	13
				4	15
81349	M39024/10-02		5935-00-702-4199	2	26

NATIONAL STOCK NUMBER AND PART NUMBER INDEX

FSCM	PART NUMBER	PART NUMBER INDEX		FIG.	ITEM
			STOCK NUMBER		
81349	M39024/10-02		5935-00-T02-4199	4	4
81349	M39024/10-03		5935-09-762-0312	2	27
				4	2
80205	NAS1515H04L		5310-00-939-1074	5	5
80205	NAS1635-04-5		5305-00-241-1076	2	18
80205	NAS1635-06-8		5305-00-362-3206	2	19
80205	NAS620C10		5310-00-989-0640	3	7
80205	NAS620C4		5310-00-057-0573	2	16
				3	12
80205	NAS620C6		5310-00-773-7624	2	7
				3	2
80205	NAS671C4		5310-00-208-3786	3	10
				5	1
80205	NAS671C6		5310-00-616-8660	2	5
80205	NAS707C2		5940-00-725-9498	4	7
18876	P39017-002-02		5905-01-133-6607	4	6
81348	QQW343TYS20AWGS0		6145-00-839-7432	BULK	13
81349	RCR07G102JS		5905-00-110-7620	2	28
				4	17
81349	RCR07G123JS		5905-00-106-1278	4	10
81349	RCR07G182JS		5905-00-114-5343	4	16
81349	RCR07G301JS		5905-00-111-4750	4	11
81349	RCR07G474JS		5905-00-105-7767	4	19
81349	RCR07G510JS		5905-00-106-1249	2	14
81349	RCQ20G510JS		5905-00-114-5438	4	9
81349	RCR32G112JS		5905-00-484-0267	4	12
81349	RCR32G510JS		5905-00-106-9349	4	8
81349	SE20X-D01S			2	15
55717	11559570			4	5
18876	13033893		5940-01-057-0362	5	21
18876	13033921		1260-01-078-3939	5	7
18876	13033976		4931-01-078-6035	5	11
55717	13033983			5	17
55717	13033986			5	13
55717	13033991		5315-00-811-9214	5	18
18876	13033994		4931-01-080-8604	1	9
55717	13034027		5910-00-189-7284	4	20
18876	13034229		5970-01-057-1433	5	9
18876	13034253		5999-01-062-4991	5	8
18876	13034322		5940-00-910-3390	2	12
				4	18
18876	13034401			1	2
18876	13034406		4931-01-057-2205	1	7
18876	13034408		4931-01-057-3846	2	1
55717	13034409			3	1
18876	13034410		4931-01-056-9578	1	6
55717	13034413			3	6
55717	13034414			3	4
55717	13034419			4	22
18876	13034420		4931-01-056-7974	1	1
55717	13034422			2	11

NATIONAL STOCK NUMBER AND PART NUMBER INDEX

FSCM	PART NUMBER	PART NUMBER INDEX STOCK NUMBER	FIG.	ITEM
55717	13034423		2	25
18876	13034440-2		4	13
55717	13034461		1	3
55717	13034462		1	5
55717	13034463-1		1	4
18876	8034915		1	8
			2	10
			3	5
			5	12

By Order of the Secretary of the Army:

JOHN A. WICKHAM, JR.
General, United States Army
Chief of Staff


Official:

DONALD J. DELANDRO
Brigadier General, United States Army
The Adjutant General

Distribution:

To be distributed in accordance with DA Form 12-32, Section III, Direct and General Support Maintenance requirements for Laser Target Designator System.

RECOMMENDED CHANGES TO EQUIPMENT TECHNICAL PUBLICATIONS



SOMETHING WRONG WITH THIS PUBLICATION?

FROM: (PRINT YOUR UNIT'S COMPLETE ADDRESS)
 CDR, 1st Bn, 65th ADA
 ATTN: SP4 John Doe
 Key West, FL 33040

DATE SENT
 14 January 1979

PUBLICATION NUMBER
TM 9-1430-550-34-1

PUBLICATION DATE
7 Sep 72

PUBLICATION TITLE
Unit of Radar Set
AN/MPQ-50 Tested at the HFC


BE EXACT PIN-POINT WHERE IT IS				IN THIS SPACE TELL WHAT IS WRONG AND WHAT SHOULD BE DONE ABOUT IT:
PAGE NO	PARA. GRAPH	FIGURE NO	TABLE NO	
9-19		9-5		<p>'B" Ready Relay K11 is shown with two #9 contacts. That contact which is wired to pin 8 of relay K16 should be changed to contact #10.</p> <p>Reads: Multimeter B indicates 600 K ohms to 9000 K ohms.</p> <p>Change to read: Multimeter B indicates 600 K ohms minimum.</p> <p>Reason: Circuit being checked could measure infinity. Multimeter can read above 9000 K ohms and still be correct.</p> <p><i>NOTE TO THE READER:</i></p> <p><i>Your comments will go directly to the writer responsible for this manual, and he will prepare the reply that is returned to you. To help him in his evaluation of your recommendations, please explain the reason for each of your recommendations, unless the reason is obvious.</i></p> <p><i>All comments will be appreciated, and will be given immediate attention. Handwritten comments are acceptable.</i></p> <p><i>For your convenience, blank "tear out" forms, preprinted, addressed, and ready to mail, are included in this manual.</i></p>
21-2	step 1C		21-2	

SAMPLE

PRINTED NAME, GRADE OR TITLE, AND TELEPHONE NUMBER
 SP4 John Doe, Autovon 222-222

SIGN HERE

RECOMMENDED CHANGES TO EQUIPMENT TECHNICAL PUBLICATIONS

 <p>THEN... JOT DOWN THE DOPE ABOUT IT ON THIS FORM, CAREFULLY CUT IT OUT. FOLD IT AND DROP IT IN THE MAIL!</p>	<h2 style="text-align: center;">SOMETHING WRONG WITH THIS PUBLICATION?</h2>	
	<p>FROM: (PRINT YOUR UNIT'S COMPLETE ADDRESS)</p>	
		<p>DATE SENT</p>

PUBLICATION NUMBER	PUBLICATION DATE	PUBLICATION TITLE
--------------------	------------------	-------------------

BE EXACT... PIN-POINT WHERE IT IS				IN THIS SPACE TELL WHAT IS WRONG AND WHAT SHOULD BE DONE ABOUT IT:
PAGE NO.	PARA-GRAPH	FIGURE NO.	TABLE NO.	

CUT ALONG THIS LINE

PRINTED NAME, GRADE OR TITLE, AND TELEPHONE NUMBER	SIGN HERE
--	-----------

REVERSE OF DA FORM 2028-2

FILL IN YOUR
UNIT'S ADDRESS

FOLD BACK

DEPARTMENT OF THE ARMY

Commander
U.S. Army Missile Command
ATTN: AMSMI-MMC-LS-LP
Redstone Arsenal, AL 35898-5238

CUT ALONG THIS LINE

